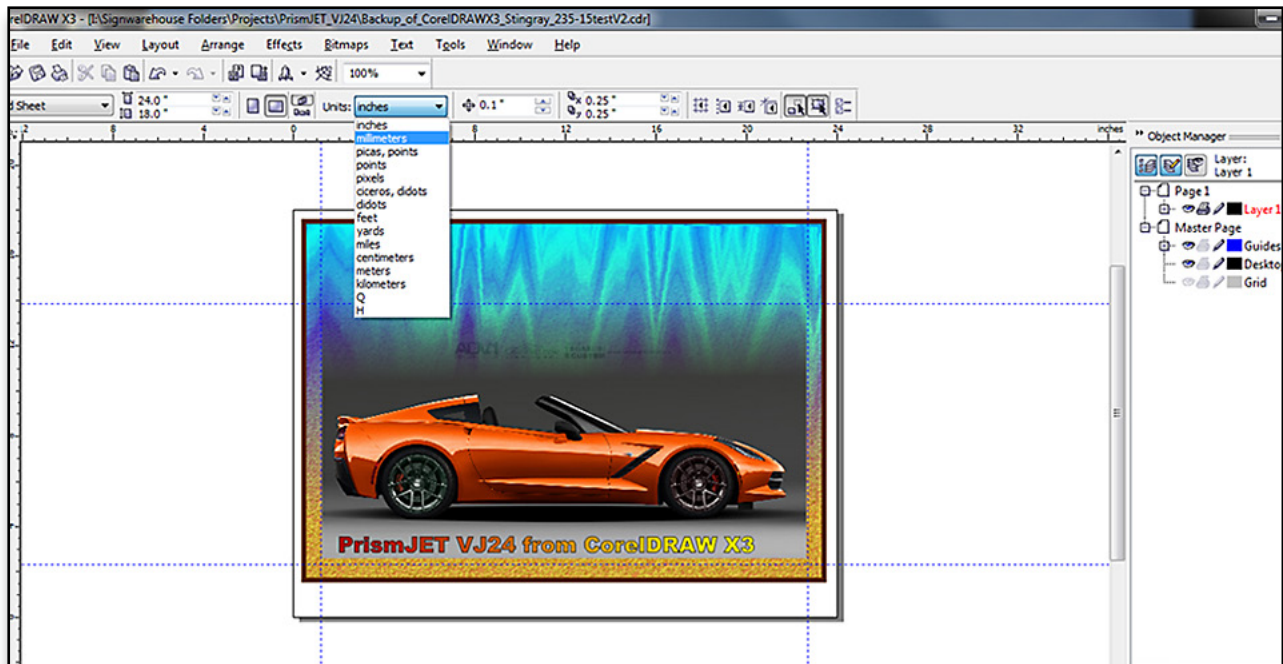


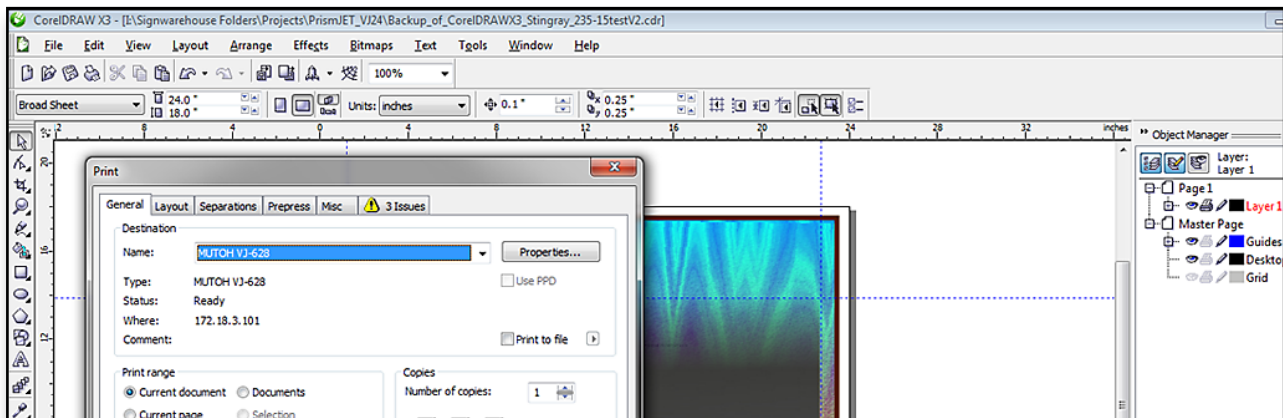
PRISMJET VJ24 - MUTOH VJ-628 Windows Print Driver Tutorial

It is important to realize that each graphic design application has unique elements in its Windows print driver. The interface seen here in our CorelDRAW screen shots may not match what you see in Photoshop or LXI. So you may have to adapt this information to your graphic application's features and processes for the first and last steps. But once you're in the MUTOH print driver, the settings and functions will be the same.

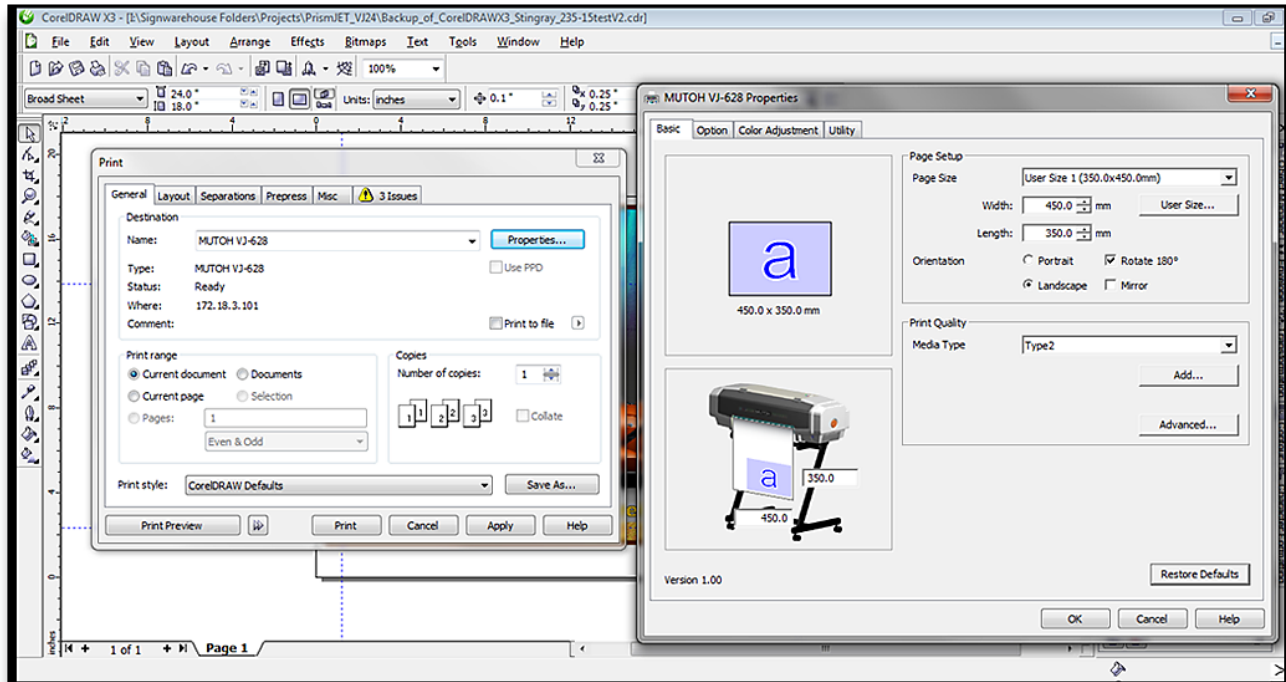
Step 1: Before you hit File/Print, change the default measurement in your graphic design software from inches to millimeters.



Step 2: Form the File/Print menu, scroll down and select MUTOH VJ-628 as the printer.

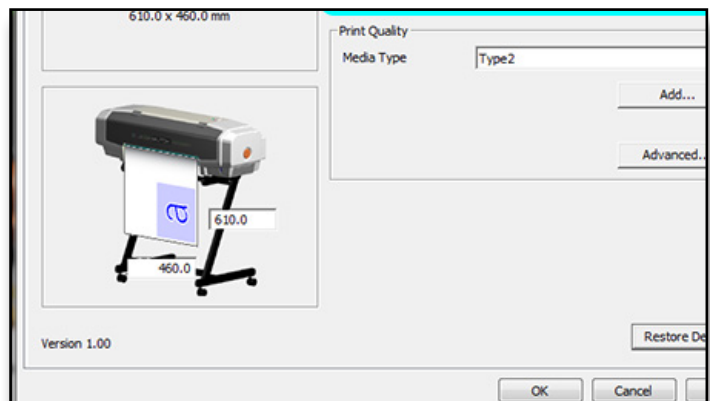


Step 3: Click the Properties button to open the MUTOH VJ-628 print driver properties (In Photoshop, this button is called Print Settings). Here you will be able to edit the size, orientation, and quality of the image and access the printer utilities.

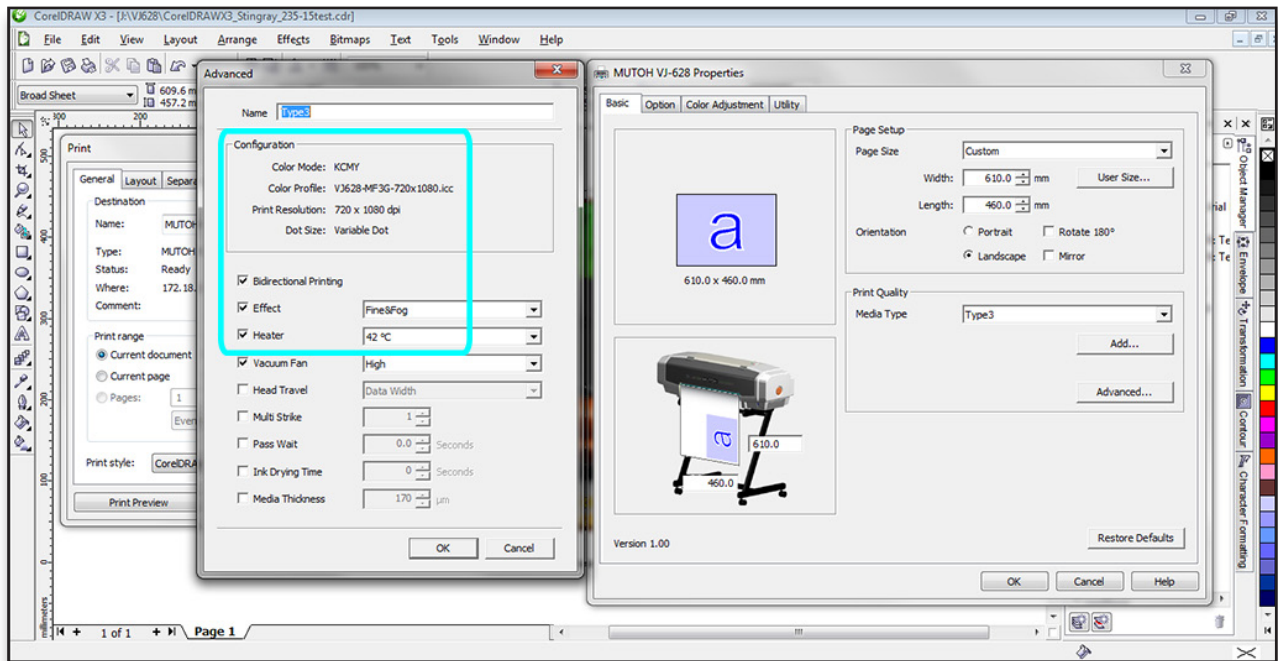


Step 4: In the Page Area window, you will need to select a page size that fits your image. A default page size such as A4 may work. To get the right fit for your image, scroll down to the bottom of the menu and select “Custom” or simply click the “User Size” button. This will allow you to enter the exact width and height in millimeters. Set this for just a little larger than the size of the printed image.

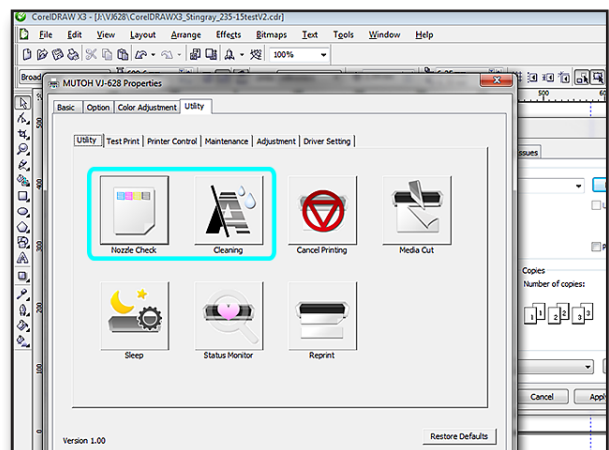
Take note of the Orientation. Choose Portrait or Landscape, rotate the image to print along the edge of the roll, or flip it if you need to print a mirror image of the original graphic. The preview icon on the left shows you how your image will be printed. Pay attention to the width and height settings and make sure those line up with the dimensions in your software.



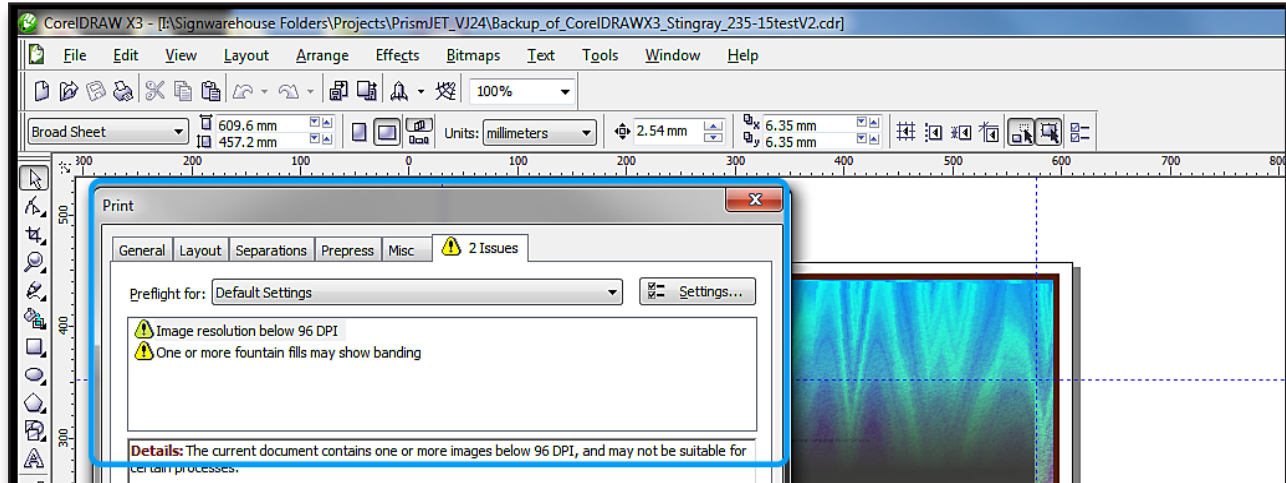
Step 5: Click the Media Type button to select from the driver's pre-installed media options. Or click the Advanced button to open the currently displayed media type and see the settings for resolution, passes, wave patterns, temperature etc. These can all be fine tuned to optimize print quality.



Step 6: Before you send your print, it's a good idea to click the Utilities tab. Here you will find the printer maintenance and control functions. You can send a nozzle check to make sure all the print head's nozzles are firing correctly and perform a head cleaning cycle if there are any clogged nozzles. After a satisfactory nozzle check has been printed, you can use the Media Cut or Printer Control/Media advance functions to feed the media forward and/or cut off the nozzle check.



Step 7: When you finish setting the size and orientation, choosing or editing a media type, and performing a nozzle check, you will be returned to the Print command screen. Here, your software may alert you to issues such as cropping (a common flag in Photoshop) or problems with native bitmap resolution or gradient steps. These are common issues in CorelDRAW's pre-flight check. You may want to address these before committing to ink & media.



Step 8: Depending on your software, a print preview may be available. This is a good place to make a final check and ensure that the size, orientation and image quality are acceptable. If so, close the Print Preview window, and send the job to the printer.

